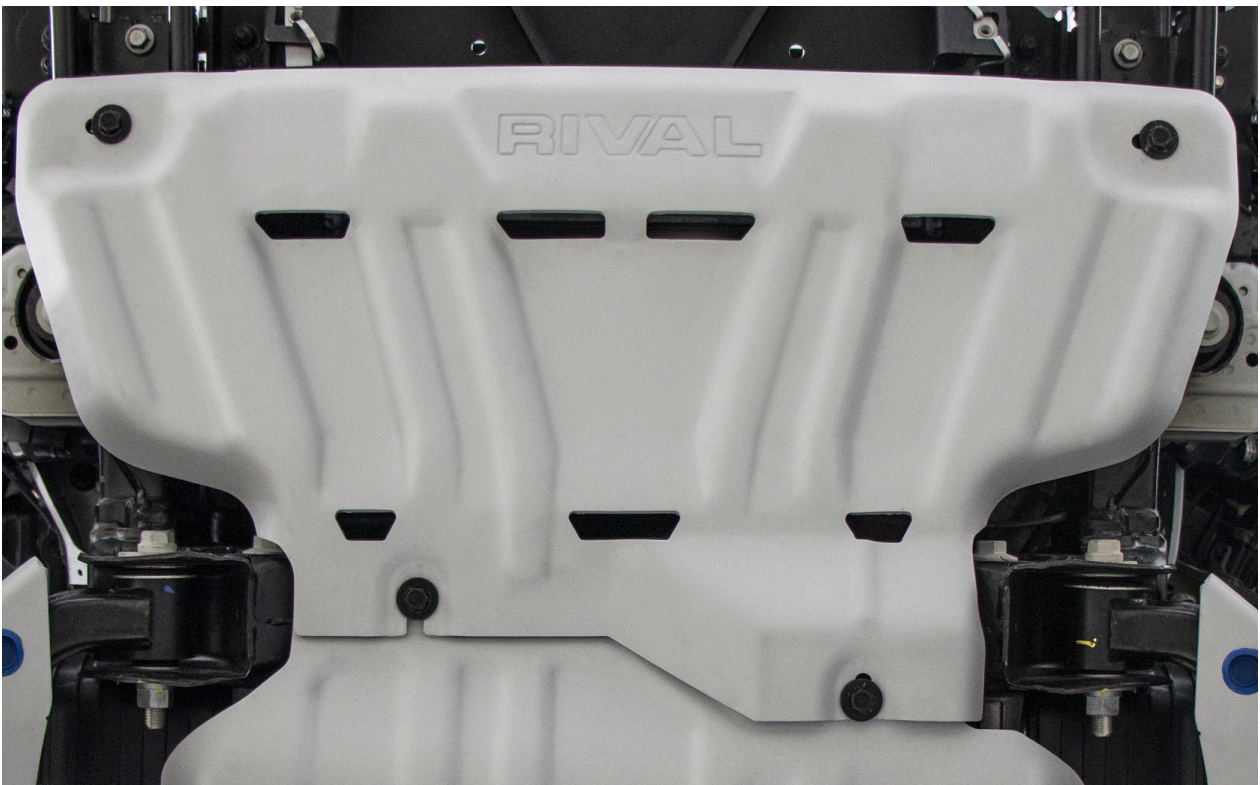


INSTALLATION MANUAL

PRODUCT: RADIATOR SKID PLATE

APPLICATION: FORD RANGER (2022-)
FORD EVEREST (2022-)
VOLKSWAGEN AMAROK (2023-)

PART NO: 2111.1884.1.3
2333.1884.1
2333.1884.1.6



CAUTION!

To reduce the risk of serious injury or damage to property: Before you start installing and using this product, read the full instructions, pay special attention to the conditions of safe use and recommendations for installation! When installing or maintaining this product, it is necessary to use protective goggles. Check the integrity of the structure and the moment the fastening is tightened every 250 miles (400 kms) of mileage. Do not use this product if there is damage to the structure or fasteners!

NOTICE

Skid plate is an additional protection, but it can not guarantee to protect against all possible damage in collisions. When driving, be careful of objects and terrain that may damage sensitive parts of the vehicle.

RADIATOR SKID PLATE



Part number 2111.1884.1.3
2333.1884.1
2333.1884.1.6

Suited to vehicle: FORD RANGER* 2.0D Bi-Turbo, 3.0D; AT; 4WD (2022-)
FORD EVEREST 2.0D Bi-Turbo; AT; 4WD (2022-)
VOLKSWAGEN AMAROK 2.0D, 3.0D; AT; 4WD (2023-)

Material: Steel / Aluminum



*Applicable to Double Cab

SAFETY NOTICE

- * The RIVAL radiator skid plate is designed to complement the use and design of the specified vehicle under conditions specified by the vehicle manufacturer.
- * While driving the vehicle at any speed, collision with any other vehicle, animal or object must always be avoided.
- * Following any collision with any other vehicle, animal or object, the RIVAL radiator skid plate and the vehicle must be inspected by a specialized or suitably qualified vehicle repairer for possible damage to the components and assemblies in order to confirm suitability for further use of the vehicle.
- * It is strongly recommended that you do not operate a vehicle with a damaged radiator skid plate or its components. In the case of damage, please contact the nearest RIVAL dealer. Vehicle, or where the skid plate has been damaged, is extremely dangerous and must be avoided at all cost.

INSTALLATION NOTICE

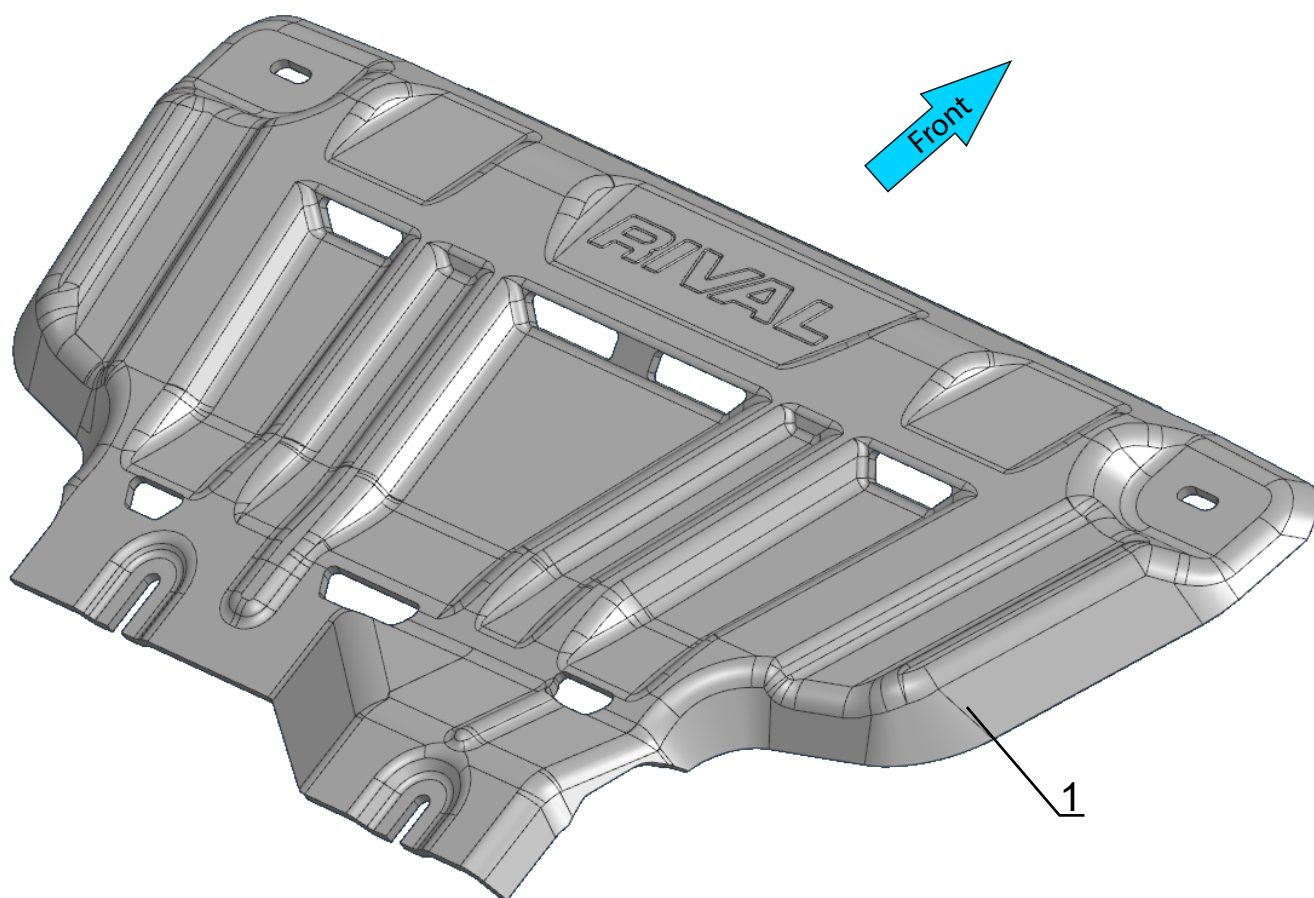
- * The RIVAL radiator skid plate must be mounted and affixed to the vehicle according to this installation manual.
- * Personal safety during the installation process must be adhered to at all times.
- * Do not install this skid plate on vehicle models other than those allowed in this manual.
- * Estimated time for installation: 1 hour.

REQUIRED TOOLS

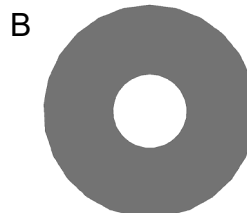
- * Basic tool kit
- * Torque wrench

TORQUE SETTING

- * M10 - 47 H·m (34.7 lb/ft)



1. Radiator skid plate..... Qty 1



A. Bolt M10x30.....Qty 4
B. Washer 10.....Qty 4

*If equipped, remove the factory skid plate or any other aftermarket skid plate.

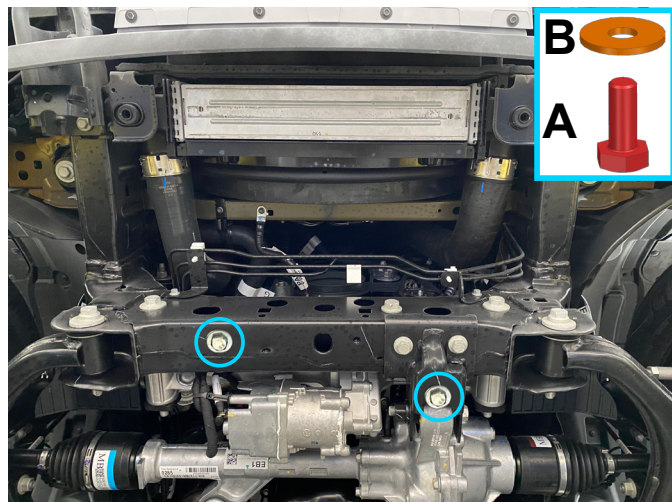


Fig. 1

1. Attach bolts M10x30 (item A) and washers 10 (item B), as shown in fig.1.

***Do not tighten yet.**

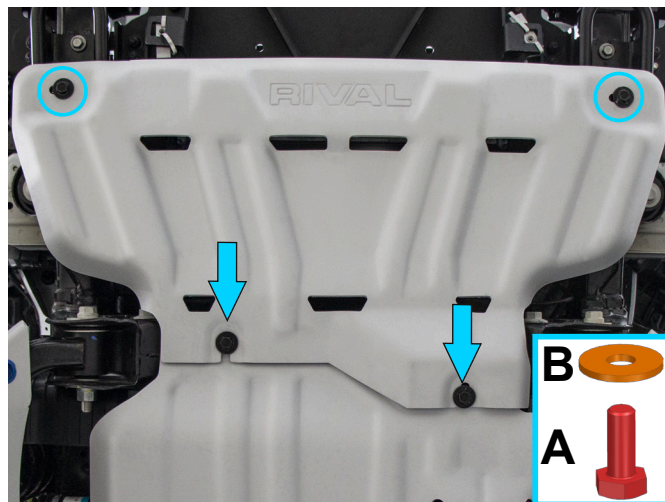


Fig. 2

2. Put radiator skid plate (item 1) on installed bolts M10x30 and washers 10 from step 1. Fix the front part of skid plate, using bolts M10x30 (item A) and washers 10 (item B), as shown in fig.2.

***Tighten hardware after that.**

Before operating a vehicle fitted with RIVAL Skid Plate:

- make sure all fittings are tightened;
- ensure the integrity of the structure and its components.

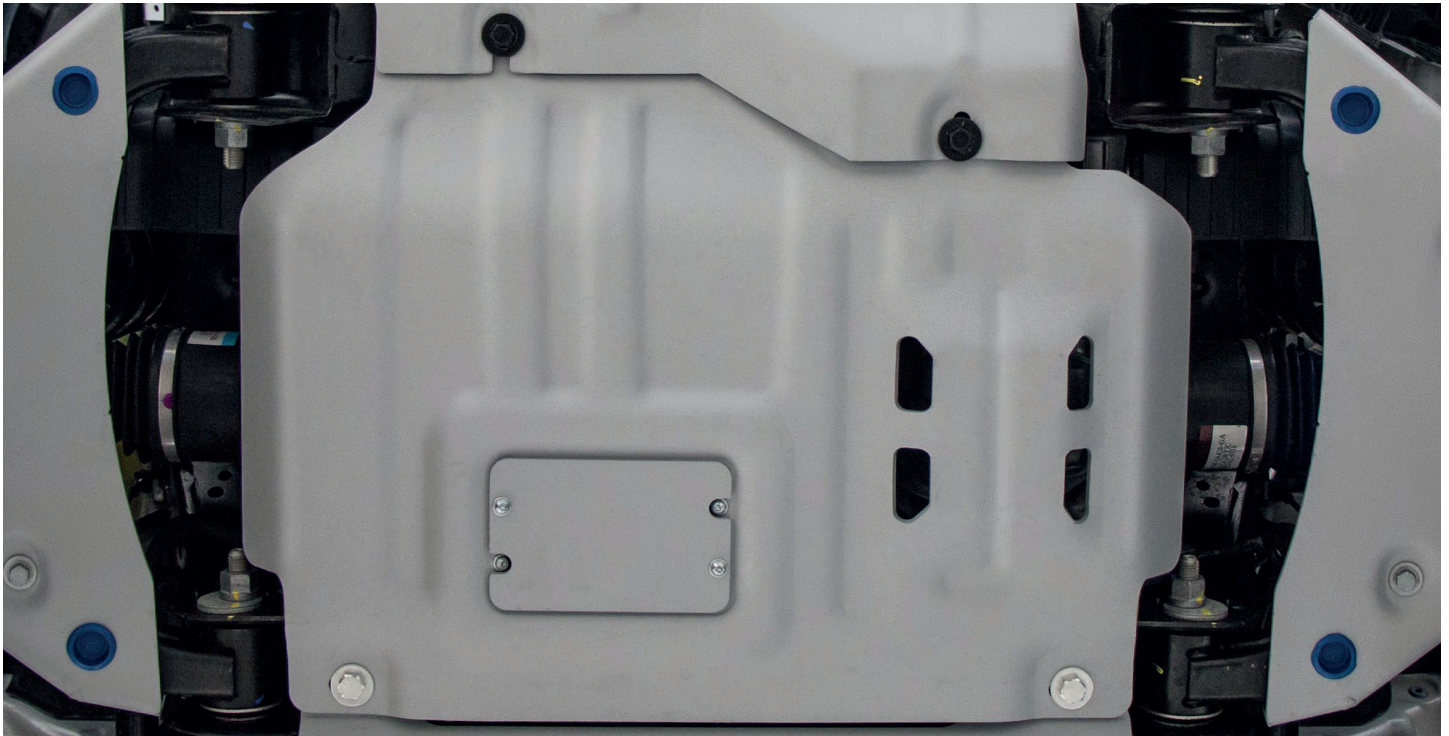
PRODUCT: ENGINE SKID PLATE

UP-TO-DATE
MANUAL

APPLICATION: FORD RANGER (2022-Present)
FORD RANGER RAPTOR (2022-Present)
FORD EVEREST (2022-Present)
VOLKSWAGEN AMAROK (2023-Present)



PART NO: 2111.1885.1.3
2333.1885.1
2333.1885.1.6



CAUTION!

To reduce the risk of serious injury or damage to property: Before you start installing and using this product, read the full instructions, pay special attention to the conditions of safe use and recommendations for installation! When installing or maintaining this product, it is necessary to use protective goggles. Check the integrity of the installed components and torque all hardware every 250 miles (400 kms). Discontinue use if there is any damage to the structure or fasteners!

NOTICE

Skid plates are supplemental protection. We cannot guarantee protection against all possible damage from impacts. When driving, be careful of objects and terrain that may damage sensitive parts of the vehicle.

ENGINE SKID PLATE

RIVAL

Part number 2111.1885.1.3
2333.1885.1
2333.1885.1.6



Suited to vehicle: Ford Ranger* 2.0D Bi-Turbo, 3.0D, 2.3; AT; 4WD (2022-Present)
Ford Ranger Raptor 3.0; AT; 4WD (2022-Present)
Ford Everest 2.0D Bi-Turbo; AT; 4WD (2022-Present)
Volkswagen Amarok 2.0D, 3.0D; AT; 4WD (2023-Present)



Material: Steel / Aluminum



***Applicable to Double Cab**

SAFETY NOTICE

- * The RIVAL skid plate is designed to complement the use and design of the specified vehicle under conditions underlined by the vehicle manufacturer.
- * While driving the vehicle at any speed, collision with another vehicle, animal or object must always be avoided.
- * Following any collision with another vehicle, animal or object, the RIVAL skid plate and the vehicle must be inspected by a specialized or suitably qualified vehicle technician for possible damage to the components and assemblies in order to confirm suitability for further use of the vehicle.
- * It is strongly recommended that you do not operate a vehicle with a damaged skid plate or its components. In the case of damage, please contact the nearest RIVAL dealer. A damaged vehicle or skid plate is extremely dangerous and should be avoided at all cost.
- * We recommend using a funnel when changing the oil to prevent spills and ensure a clean process.

INSTALLATION NOTICE

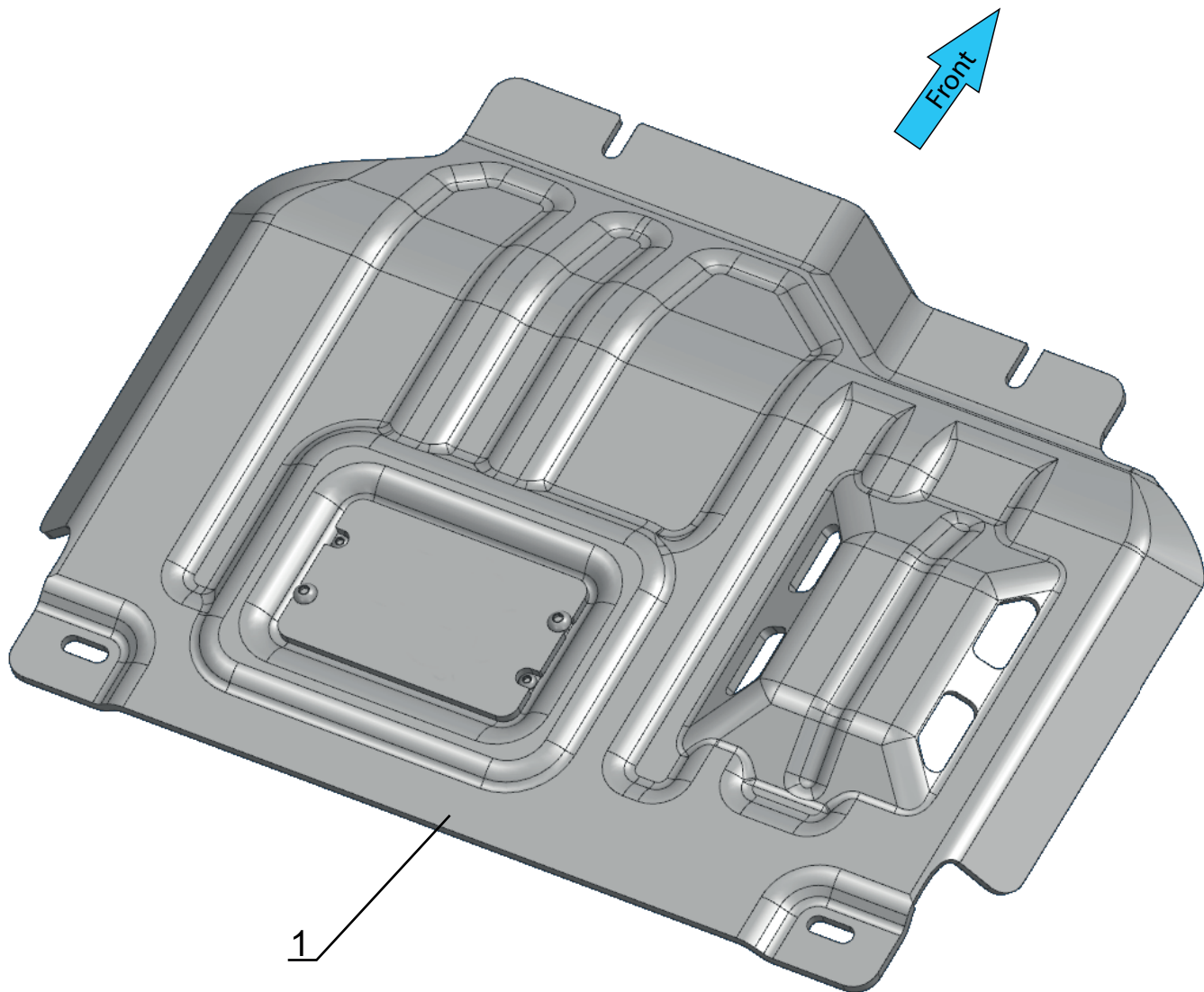
- * The RIVAL skid plate must be mounted to the vehicle according to this installation manual.
- * Personal safety during the installation process must be adhered to at all times.
- * Do not install this skid plate on vehicle models other than those listed in this manual.
- * Estimated time for installation: 1 hour.
- * It's good practice to use a tap on all included hardware and bracketry to ensure ease of final assembly.

REQUIRED TOOLS

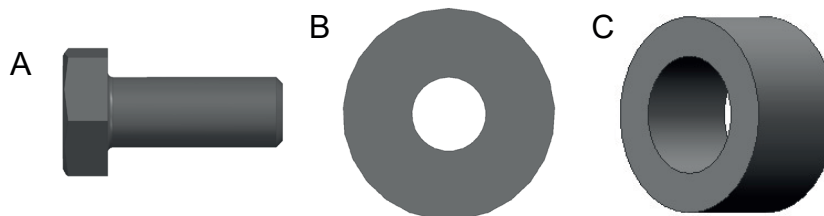
- * Basic tool kit
- * Torque wrench

TORQUE SETTING

- * M10 - 47 Nm (34.7 lb/ft)



1. Engine skid plate.....Qty 1



A. Bolt M10x1.5x30.....Qty 4
B. Washer M10.....Qty 4
C. Spacer 6 mm.....Qty 2

INSTALLATION PROCEDURE



*If equipped, remove factory or any aftermarket skid plates that might interfere with installation.

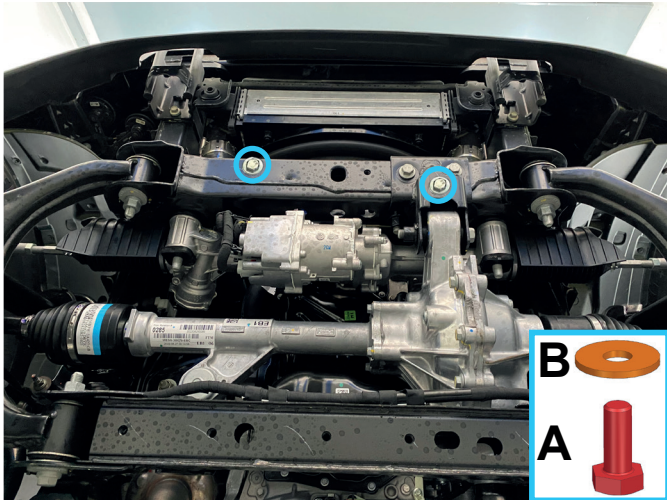


Fig. 1

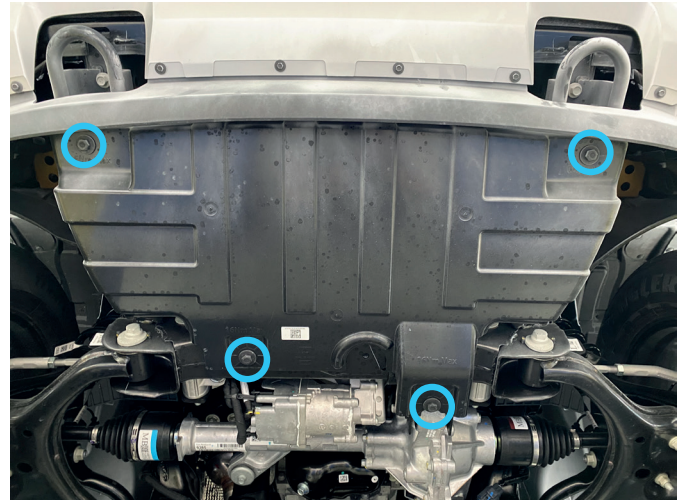


Fig. 2

1. Loosely install M10x30 bolts (item A) with M10 washers (item B) into crossmember as shown in fig.1. At this point only thread the bolt in 2-3 turns to allow the skid plate to slide under in the next step.

**If the vehicle has the RIVAL radiator skid plate, loosen the front and rear bolts of the radiator skid plate shown in fig.2 (2111.1884.1.3 / 2333.1884.1 / 2333.1884.1.6)

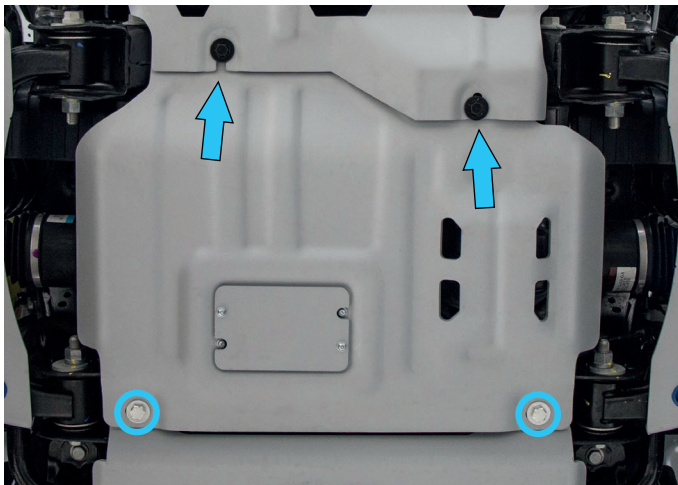


Fig. 3

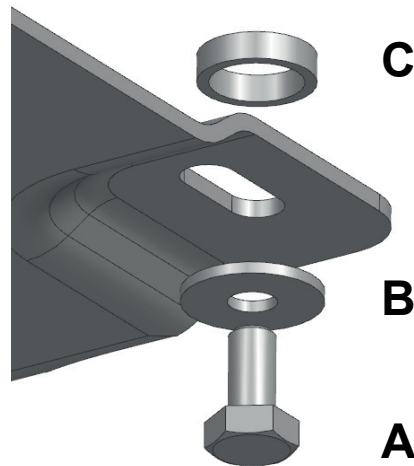


Fig. 4

2. Slide front of the skid plate (item 1) under the previously installed M10x30 bolts and M10 washers from step 1. Secure the rear of engine skid plate as shown in fig.3 using M10x30 bolts (item A), M10 washers (item B) and spacers (item C) as oriented in fig.4

***Tighten all hardware.**

*Do not use spacers (item C) if you plan to install the RIVAL transmission skid plate at the same time.

Before operating a vehicle fitted with RIVAL Skid Plate:

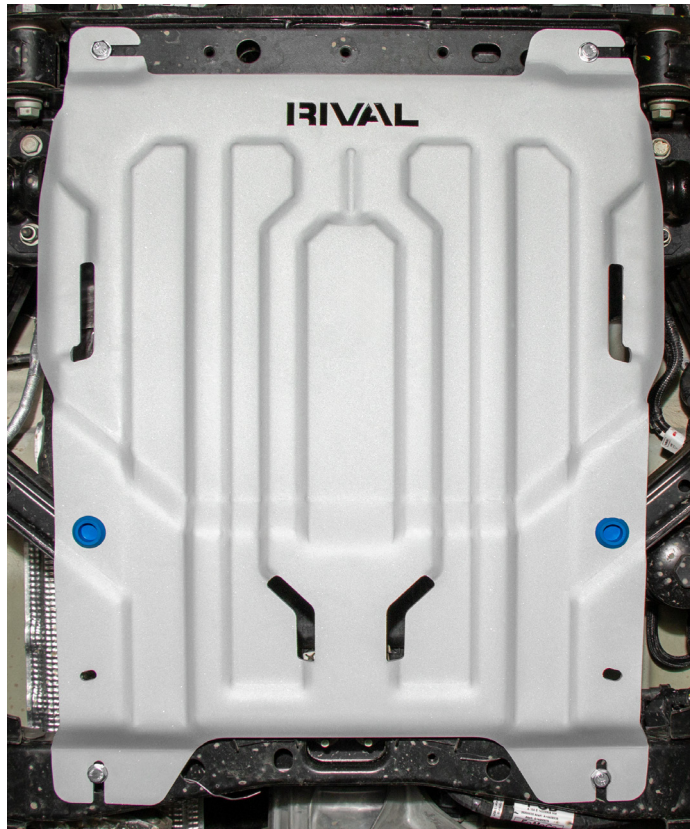
- make sure all fittings are tightened;
- ensure the integrity of the structure and its components.

PRODUCT: TRANSMISSION SKID PLATE

UP-TO-DATE
MANUAL

APPLICATION: FORD RANGER (2022-Present)
FORD RANGER RAPTOR (2022-Present)
FORD EVEREST (2022-Present)
VOLKSWAGEN AMAROK (2023-Present)

PART NO: 2111.1886.4.3
2333.1886.4
2333.1886.4.6



CAUTION!

To reduce the risk of serious injury or damage to property: Before you start installing and using this product, read the full instructions, pay special attention to the conditions of safe use and recommendations for installation! When installing or maintaining this product, it is necessary to use protective goggles. Check the integrity of the installed components and torque all hardware every 250 miles (400 kms). Discontinue use if there is any damage to the structure or fasteners!

NOTICE

Skid plates are supplemental protection. We cannot guarantee protection against all possible damage from impacts. When driving, be careful of objects and terrain that may damage sensitive parts of the vehicle.

TRANSMISSION SKID PLATE

RIVAL

Part number 2111.1886.3.3
2333.1886.3
2333.1886.3.6



Suited to vehicle: FORD RANGER* 2.3, 3.0D, 2.0D Bi-Turbo; AT; 4WD (2022-Present)
FORD RANGER RAPTOR 3.0; AT; 4WD (2022-Present)
FORD EVEREST 2.0D Bi-Turbo; AT; 4WD (2022-Present)
VOLKSWAGEN AMAROK* 2.0D, 3.0D; AT; 4WD (2023-Present)

Material: Steel / Aluminum



*Applicable to Double Cab

SAFETY NOTICE

- * The RIVAL skid plate is designed to complement the use and design of the specified vehicle under conditions underlined by the vehicle manufacturer.
- * While driving the vehicle at any speed, collision with another vehicle, animal or object must always be avoided.
- * Following any collision with another vehicle, animal or object, the RIVAL skid plate and the vehicle must be inspected by a specialized or suitably qualified vehicle technician for possible damage to the components and assemblies in order to confirm suitability for further use of the vehicle.
- * It is strongly recommended that you do not operate a vehicle with a damaged skid plate or its components. In the case of damage, please contact the nearest RIVAL dealer. A damaged vehicle or skid plate is extremely dangerous and should be avoided at all cost.
- * We recommend using a funnel when changing the oil to prevent spills and ensure a clean process.

INSTALLATION NOTICE

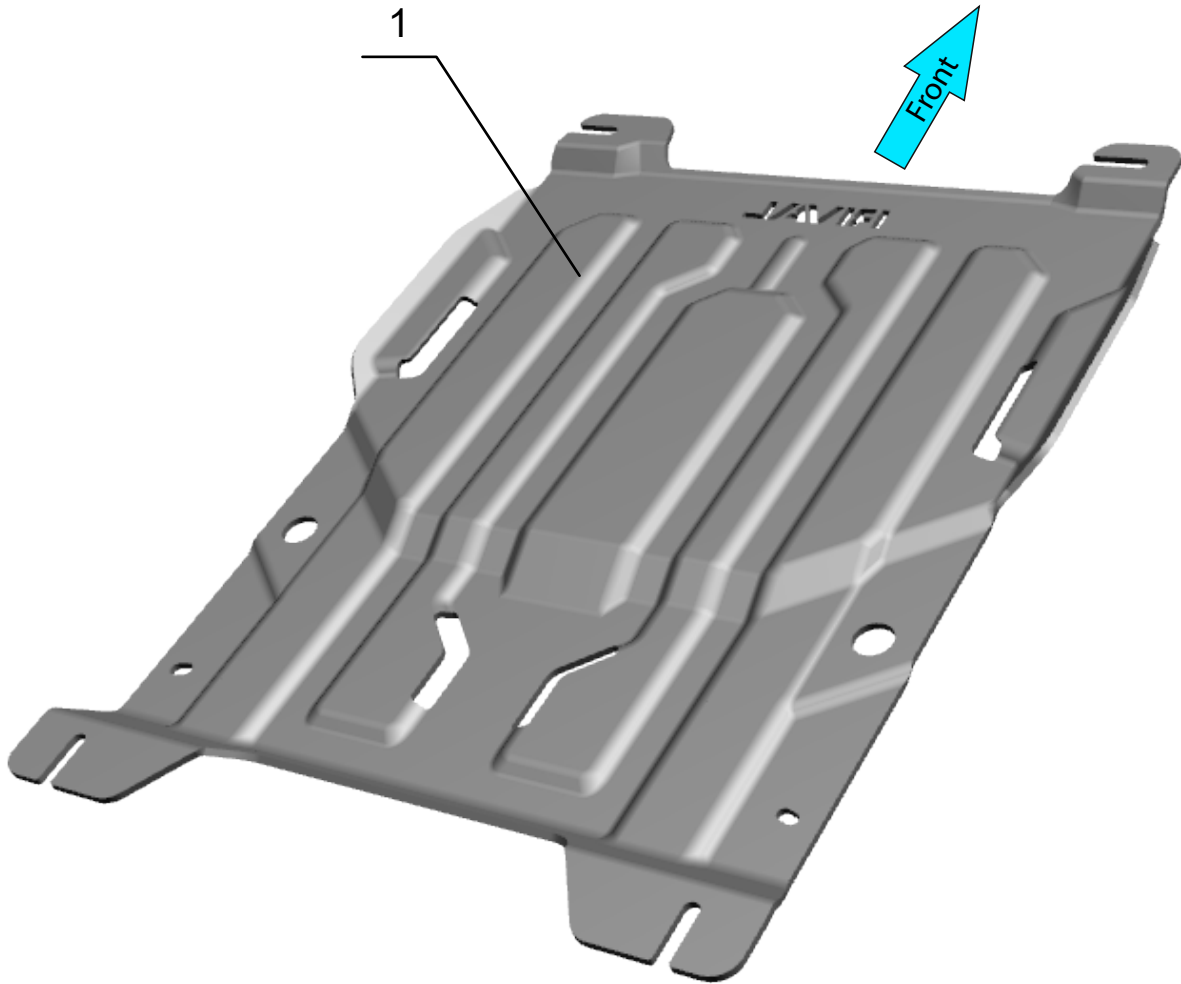
- * The RIVAL skid plate must be mounted to the vehicle according to this installation manual.
- * Personal safety during the installation process must be adhered to at all times.
- * Do not install this skid plate on vehicle models other than those listed in this manual.
- * Estimated time for installation: 1 hour.
- * It's good practice to use a tap on all included hardware and bracketry to ensure ease of final assembly.

REQUIRED TOOLS

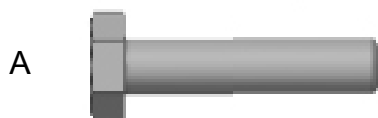
- * Basic tool kit
- * Torque wrench

TORQUE SETTING

- * M10 - 47 Nm (34.7 lb/ft)
- * M12 - 77 Nm (56.8 lb/ft)



1. Transmission skid plate.....Qty 1



A. Bolt M10x1.5x35.....	Qty 6
B. Bolt M12x1.75x30.....	Qty 1
C. Washer M10.....	Qty 6
D. Washer M12.....	Qty 1
E. Bracket.....	Qty 2
F. Insert nut M10x65.....	Qty 2

INSTALLATION PROCEDURE



*If equipped, remove factory or any aftermarket skid plates that might interfere with installation.
*Set removed hardware aside for re-use.

For FORD EVEREST (2022-Present) FORD RANGER (2022-Present) except FORD RANGER US VOLKSWAGEN AMAROK (2023-Present)

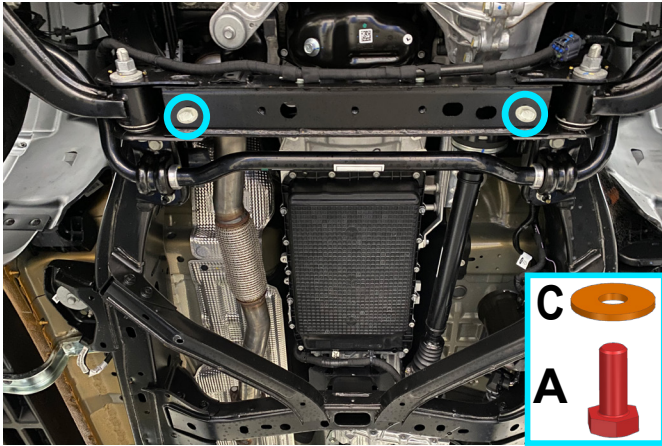


Fig. 1

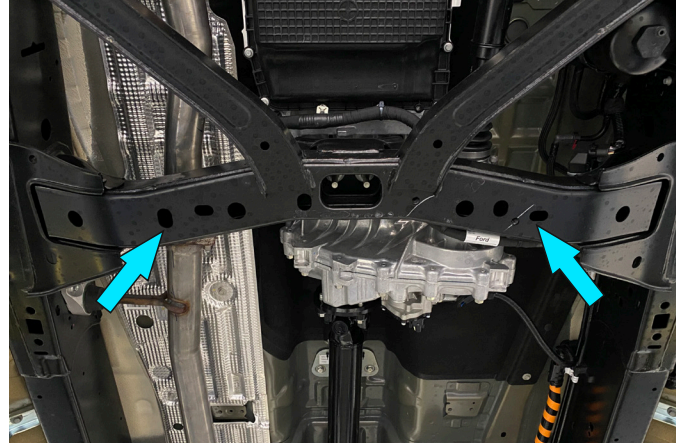


Fig. 2

1. Loosely install supplied M10x35 bolts (item A) with M10 washers (item C) as shown in fig.1. At this point only thread the bolt in 2-3 turns to allow the skid plate to slide under in a later step.

2. Install M10 insert nuts (item F) and align with holes as shown in fig.2.

***If Factory or Rival engine skid is installed, loosen rear most bolts.**

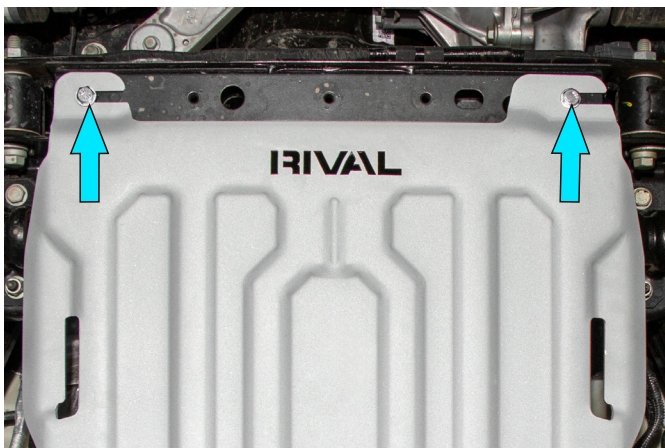


Fig. 3

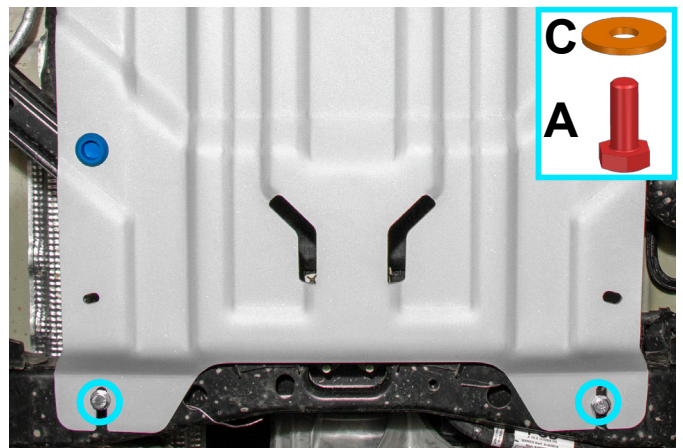


Fig. 4

3. Slide the front of the transmission skid plate (item 1) over previously installed M10x35 bolts and M10 washers. If using the Factory or Rival engine skid plate, slide the transmission skid plate on top of the engine skid plate (Fig.3).

4. Secure the rear of the transmission skid plate (item 1) to previously installed M10 insert nuts (item F) using M10x35 bolts (item A) and M10 washers (item C) as shown in fig.4.

***Do not tighten hardware.**

***Tighten all hardware.**

INSTALLATION PROCEDURE

RIVAL

For FORD RANGER RAPTOR (2022-Present)
FORD RANGER US (2022-Present)

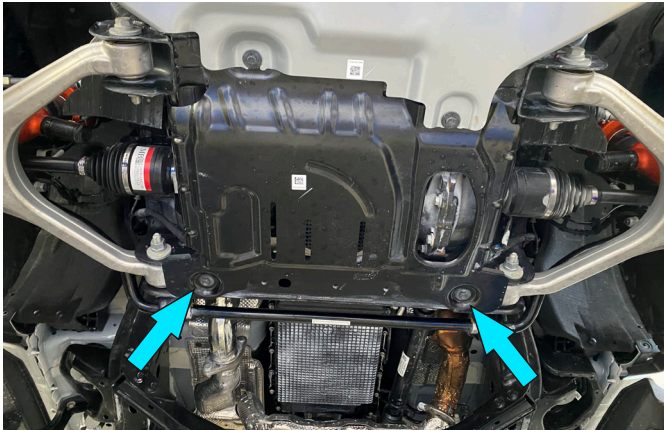


Fig. 1

1. Loosen bolts on factory or Rival engine skid plate (fig.1).

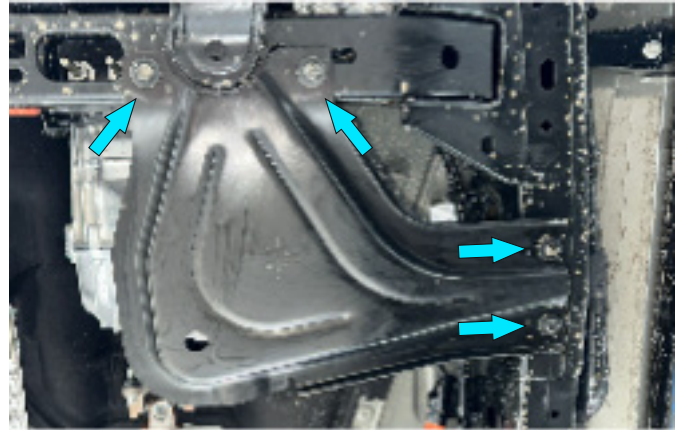


Fig. 2

2. Remove bolts from the factory transfer case skid plate and set aside. (fig.2).

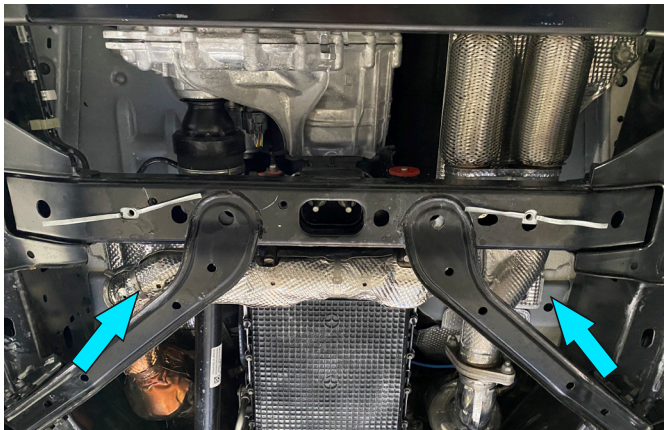


Fig. 3

3. Install M10 insert nuts (item F) on both sides of the factory crossmember as shown in fig.3. If there is a factory threaded hole on the passenger side (fig.4), install M10 insert nut (item F) only on the driver's side.



Fig. 4

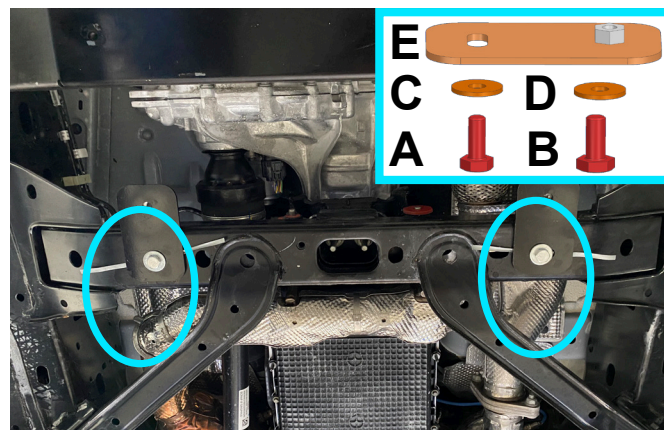


Fig. 5

4. Loosely secure brackets (item E) to previously installed M10 insert nuts (item F) using M10x35 bolts (item A) and M10 washers (item C) as shown in fig.5. Make sure the welded nut on the brackets (item E) is facing upwards. If there is a factory threaded hole use the supplied M12x30 bolt (item B) and M12 washer (item D) on the passenger side.

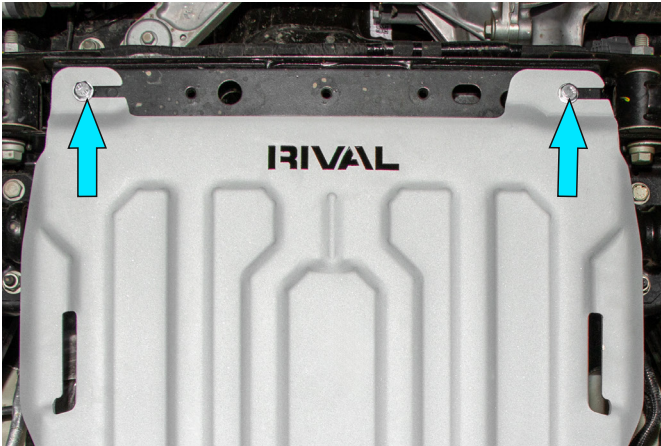


Fig. 6

5. Slide the front part of the transmission skid plate (item 1) above engine skid plate on the previously installed bolts (fig.6).

***Do not tighten yet.**

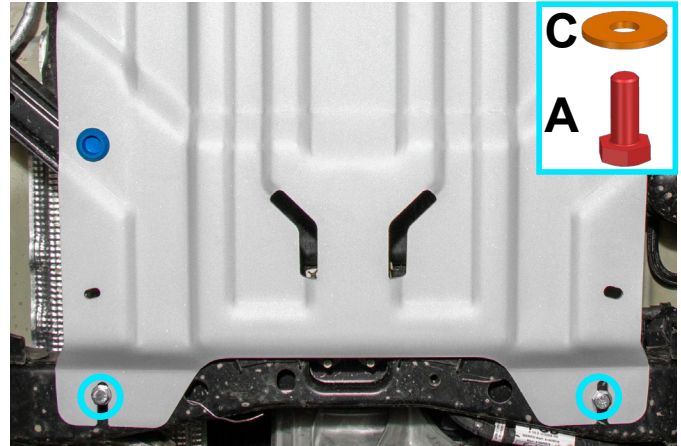


Fig. 7

6. Secure the rear of the transmission skid plate (item 1) to previously installed brackets (item E) using M10x35 bolts (item A) and M10 washers (item C) as shown in fig.7.

***Tighten hardware after that.**

Before operating a vehicle fitted with RIVAL Skid Plate:

- Make sure all hardware is torqued.
- Ensure the integrity of the structure and all its components.



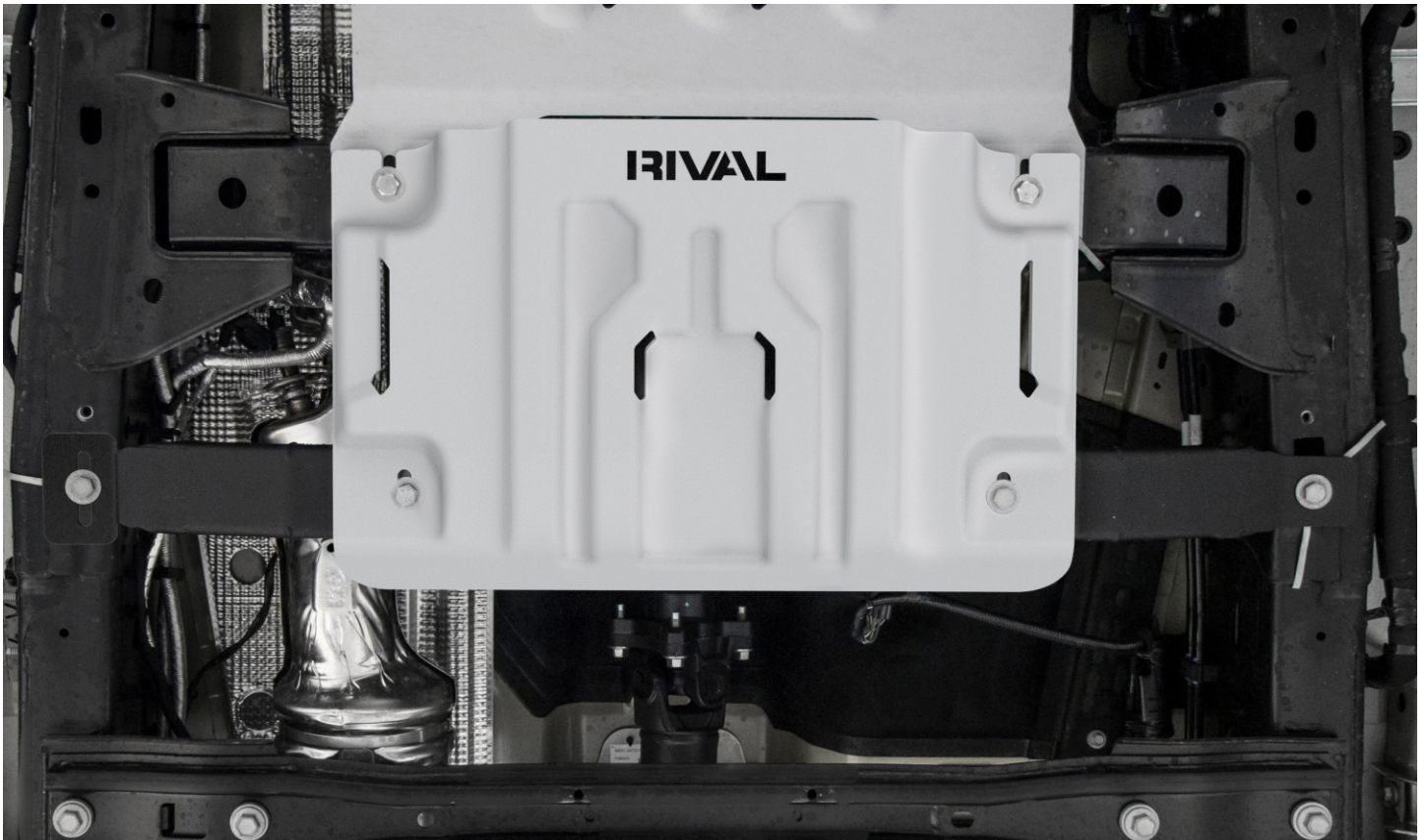
INSTALLATION MANUAL

RIVAL

PRODUCT: TRANSFER CASE SKID PLATE

APPLICATION: FORD RANGER (2022-Present)
FORD RANGER RAPTOR (2022-Present)
FORD EVEREST (2022-Present)
VOLKSWAGEN AMAROK (2023-Present)

PART NO: 2111.1887.4.3
2333.1887.4
2333.1887.4.6



CAUTION!

To reduce the risk of serious injury or damage to property: Before you start installing and using this product, read the full instructions, pay special attention to the conditions of safe use and recommendations for installation! When installing or maintaining this product, it is necessary to use protective goggles. Check the integrity of the installed components and torque all hardware every 250 miles (400 kms). Discontinue use if there is any damage to the structure or fasteners!

NOTICE

Skid plates are supplemental protection. We cannot guarantee protection against all possible damage from impacts. When driving, be careful of objects and terrain that may damage sensitive parts of the vehicle.

TRANSFER CASE SKID PLATE

RIVAL

Part number: 2111.1887.4.3
2333.1887.4
2333.1887.4.6

Suited to vehicle: FORD RANGER 2.3, 2.0D Bi-Turbo, 3.0D; AT; 4WD (2022-Present)
FORD RANGER RAPTOR 3.0; AT; 4WD (2022-Present)
FORD EVEREST 2.0D Bi-Turbo; AT; 4WD (2022-Present)
VOLKSWAGEN AMAROK 2.0D, 3.0D; AT; 4WD (2023-Present)

Material: Steel / Aluminum



SAFETY NOTICE

- * The RIVAL skid plate is designed to complement the use and design of the specified vehicle under conditions underlined by the vehicle manufacturer.
- * While driving the vehicle at any speed, collision with another vehicle, animal or object must always be avoided.
- * Following any collision with another vehicle, animal or object, the RIVAL skid plate and the vehicle must be inspected by a specialized or suitably qualified vehicle technician for possible damage to the components and assemblies in order to confirm suitability for further use of the vehicle.
- * It is strongly recommended that you do not operate a vehicle with a damaged skid plate or its components. In the case of damage, please contact the nearest RIVAL dealer. A damaged vehicle or skid plate is extremely dangerous and should be avoided at all cost.
- * We recommend using a funnel when changing the oil to prevent spills and ensure a clean process.

INSTALLATION NOTICE

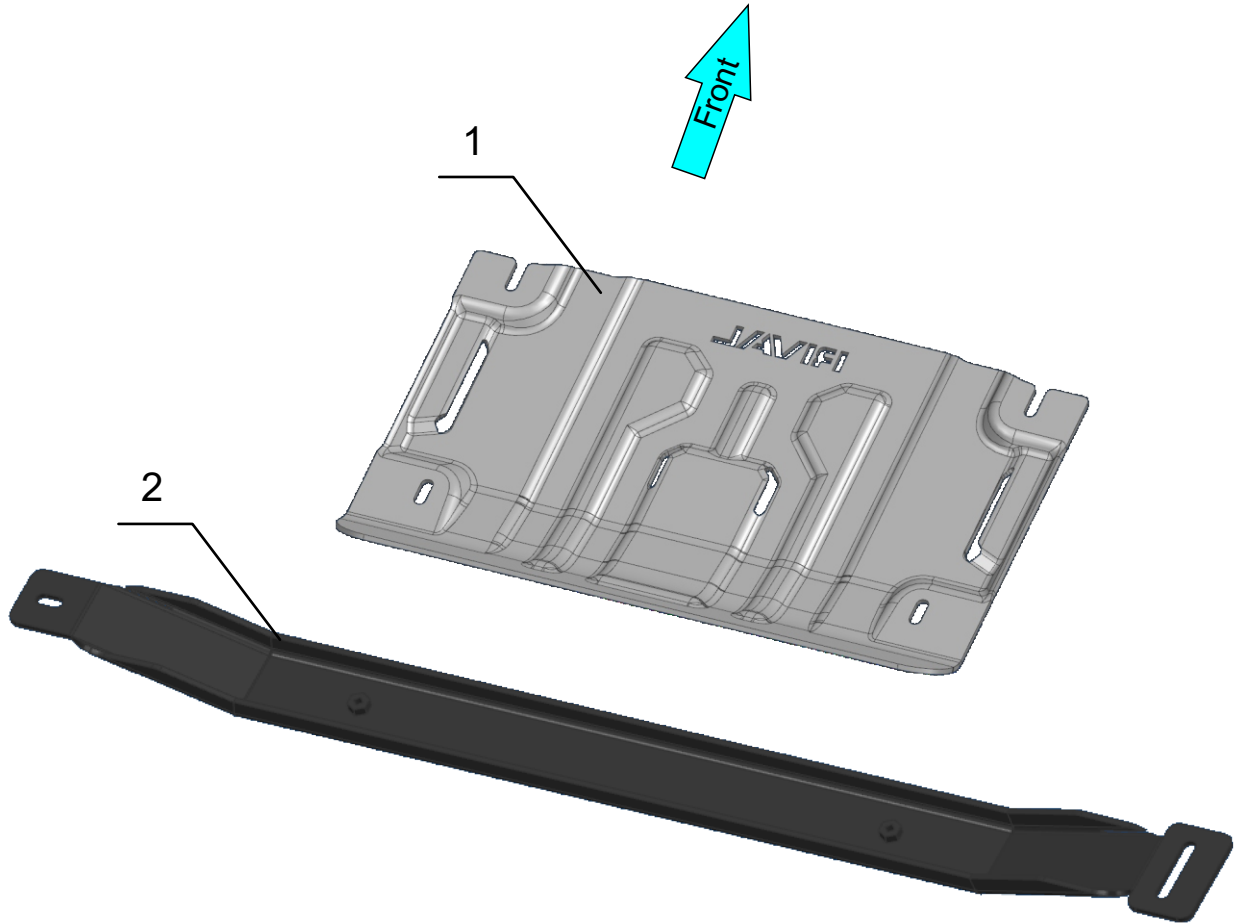
- * The RIVAL skid plate must be mounted to the vehicle according to this installation manual.
- * Personal safety during the installation process must be adhered to at all times.
- * Do not install this skid plate on vehicle models other than those listed in this manual.
- * Estimated time for installation: 1 hour.
- * It's good practice to use a tap on all included hardware and bracketry to ensure ease of final assembly.

REQUIRED TOOLS

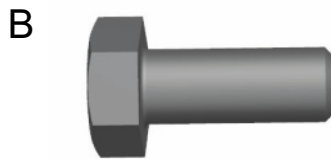
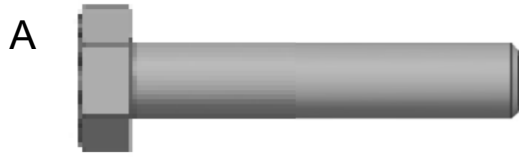
- * Basic tool kit
- * Torque wrench

TORQUE SETTING

- * M10 - 47 N·m (34.7 lb/ft)
- * M12 - 77 N·m (56.8 lb/ft)



- 1. Transfer case skid plate.....Qty 1
- 2. Crossmember.....Qty 1



A. Bolt M10x1.5x30 (2 pc. pre installed).....	Qty 8
B. Bolt M12x1.75x30.....	Qty 2
C. Washer M10 (2 pc. pre installed).....	Qty 8
D. Washer M12.....	Qty 2
E. Bracket.....	Qty 2
F. Insert nut M10x65.....	Qty 6

INSTALLATION PROCEDURE



*If equipped, remove factory or any aftermarket skid plates that might interfere with installation.

*Before installation: Remove M10x35 bolts (item A) and M10 washers (item B), securing Transfer Case skid plate (item 1) and crossmember (item 2). Set aside for use in later steps.

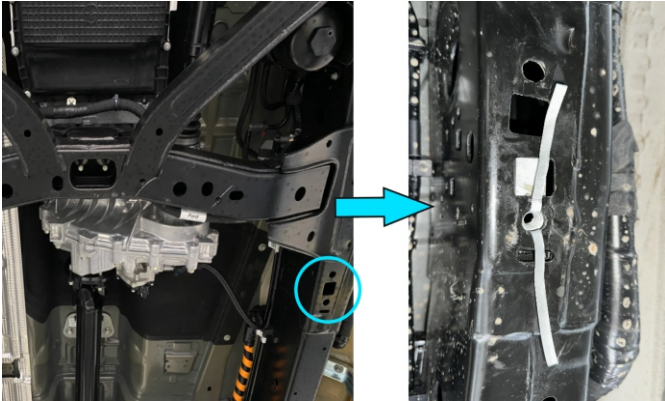


Fig. 1

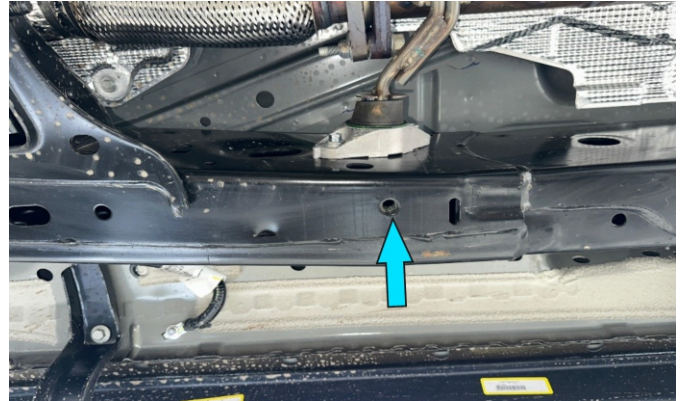


Fig. 2

1. Install M10 insert nuts (item F) on both sides of the frame as shown in fig.1. If there is a factory threaded hole on the passenger side (fig.2), it is only necessary to install an insert nut on the drivers side.

*If there are factory cage nuts in the positions listed above you can re-use those.

For Ford Ranger V-2.3L

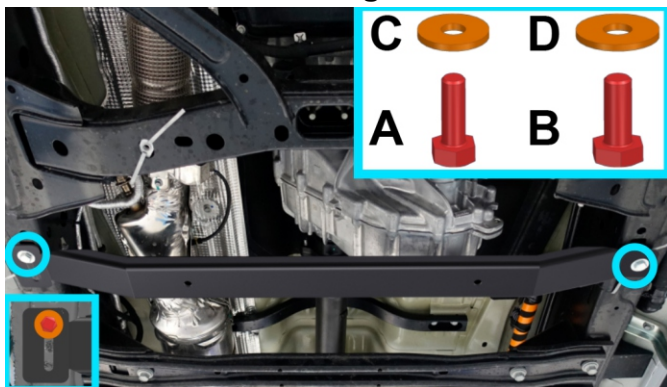


Fig. 3

For other models

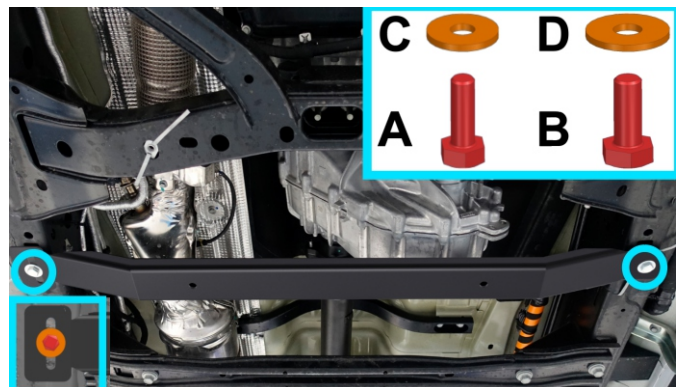


Fig. 4

2. Secure the supplied crossmember (item 2) to the previously installed M10 insert nuts (item F) using M10x1.25x30 bolts (item A) and M10 washers (item C) as shown in fig.3&4. If there is a factory threaded hole, use supplied M12x1.75x30 bolt (item B) and M12 washer (item D) on the passenger side.

*Do not tighten.

For Ford Ranger, Everest / Volkswagen Amarok

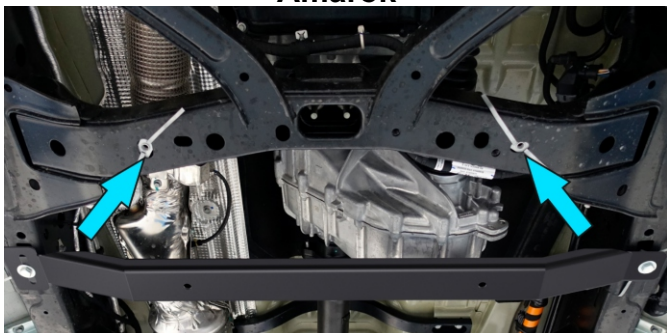


Fig. 5

For Ford Ranger Raptor

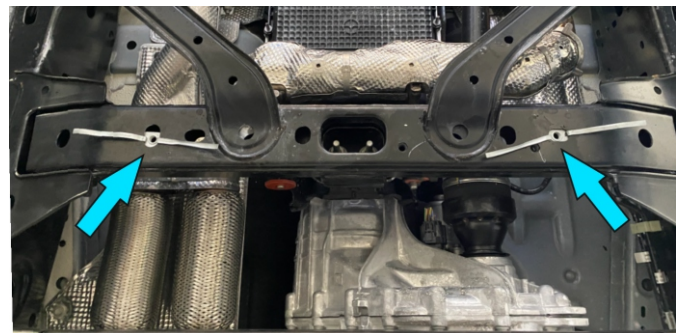


Fig. 6

3. Install M10 insert nuts (item F) as shown in fig.5,6. If RIVAL transmission skid plate is installed, loosen rear most bolts.

INSTALLATION PROCEDURE

RIVAL

For FORD RANGER, FORD EVEREST and
VOLKSWAGEN AMAROK

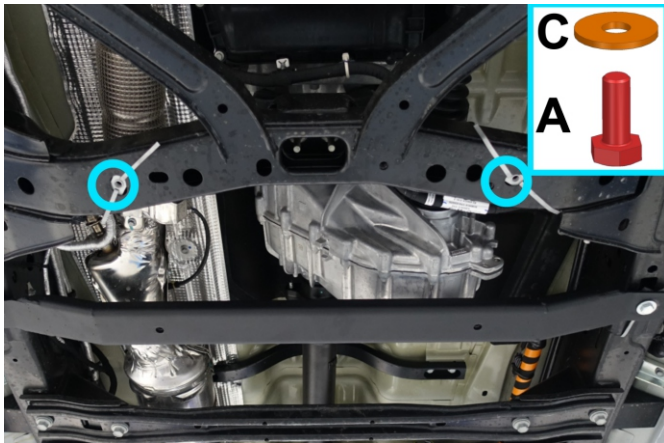


Fig. 7

4. Loosely install supplied M10x1.5x30 bolts (item A) and M10 washers (item C) as shown in fig.7.

***Do not tighten.**

****If you have a RIVAL transmission skid plate installed, skip step 4.**

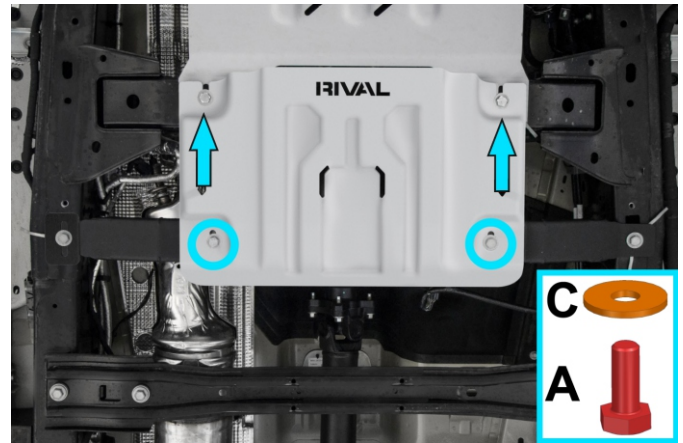


Fig. 8

5. Slide transfer case skid plate (item 1) over previously installed M10x1.5x30 bolts and M10 washers from step 4. Secure the rear of the skid plate to the previously installed crossmember (item2) using M10x1.5x30 bolts (item A) and M10 washers (item C) as shown in fig.8. If you have the Rival transmission skid plate slide transfer case skid over previously loosened bolts and under transfer case skid as pictured in fig.8.

***Tighten all hardware.**

For FORD RANGER RAPTOR

****If you have a RIVAL transmission skid plate installed, skip step 6 & 7.**

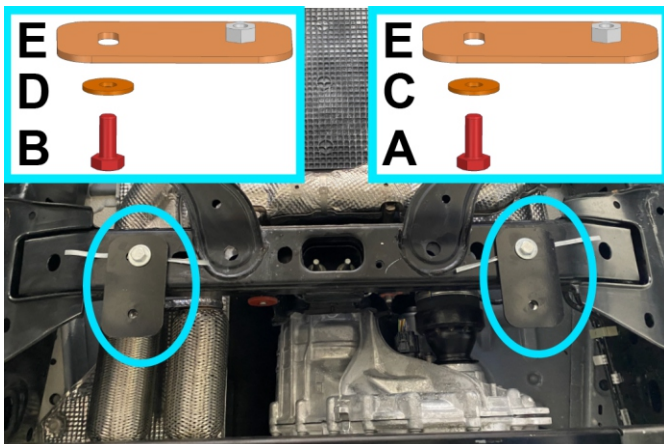


Fig. 9

6. Secure brackets (item E) to the previously installed insert nuts M10 (item F) from step 3 using M10x1.5x30 bolts (item A) and M10 washers (item C) as shown in fig.9. If there is a factory threaded hole on the passenger side use M12x1.75x30 bolt (item B) with washer M12 (item D). Ensure welded nuts on the brackets are facing up.

***Do not tighten.**

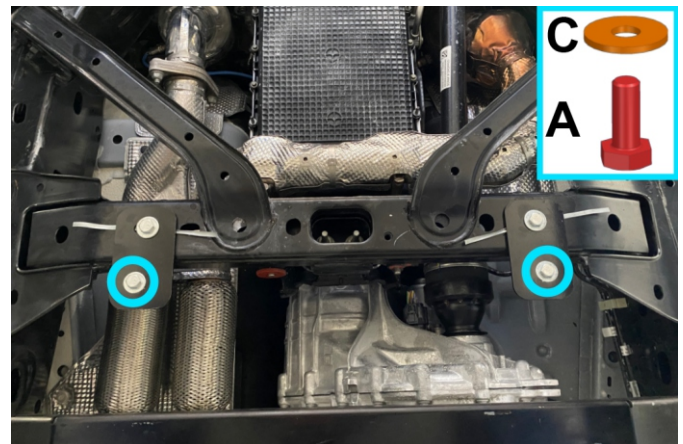


Fig. 10

7. Loosely install supplied M10x1.5x30 bolts (item A) and M10 washers (item C) to brackets (item E) as shown in fig.10.

***Do not tighten.**

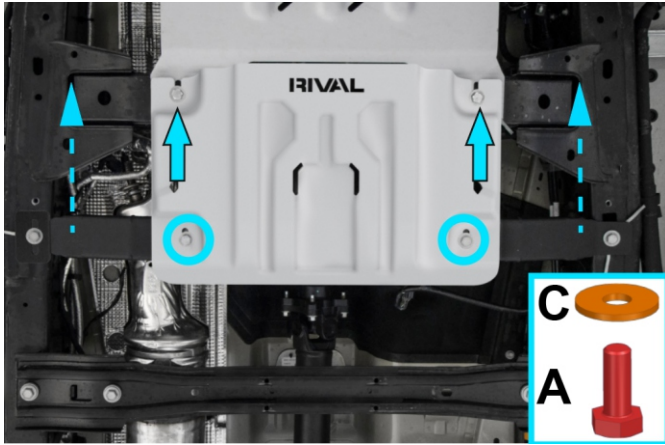


Fig. 11

8. Slide transfer case skid plate (item 1) over the previously installed M10x1.5x30 bolts and M10 washers installed in step 7. Slide the transfer case skid plate as far forward as possible and secure the rear of the skid plate to the previously installed crossmember using M10x1.5x30 bolts (item A) and M10 washers (item C) as shown in fig.11.

***Tighten all hardware.**

Before operating a vehicle fitted with RIVAL Skid Plate:

- Make sure all hardware is torqued.
- Ensure the integrity of the structure and all its components.

